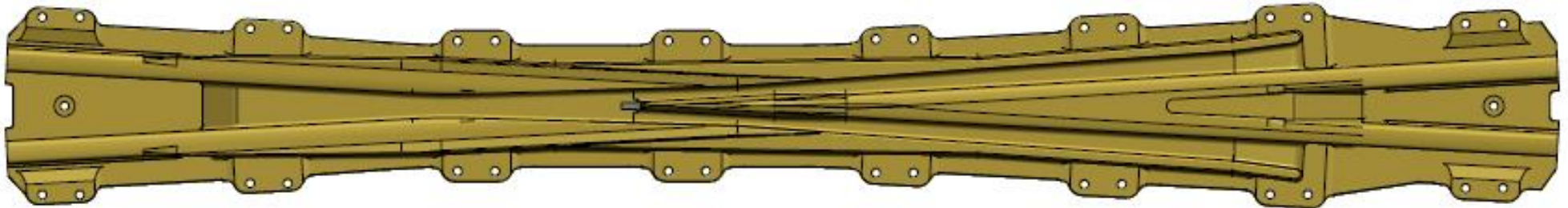
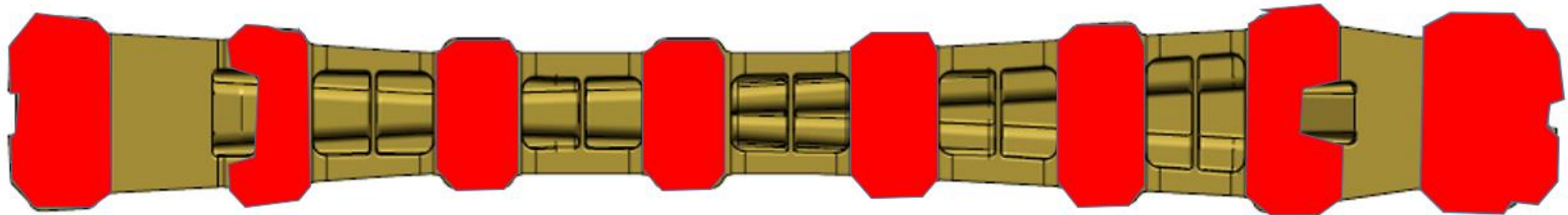




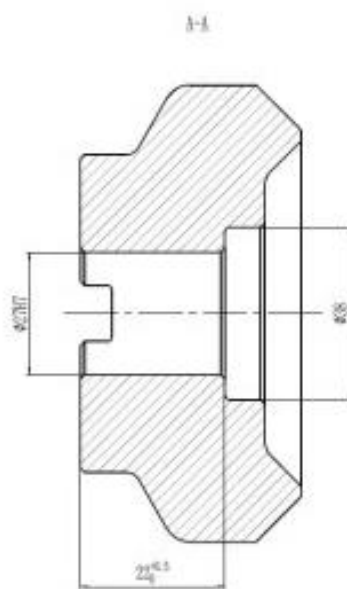
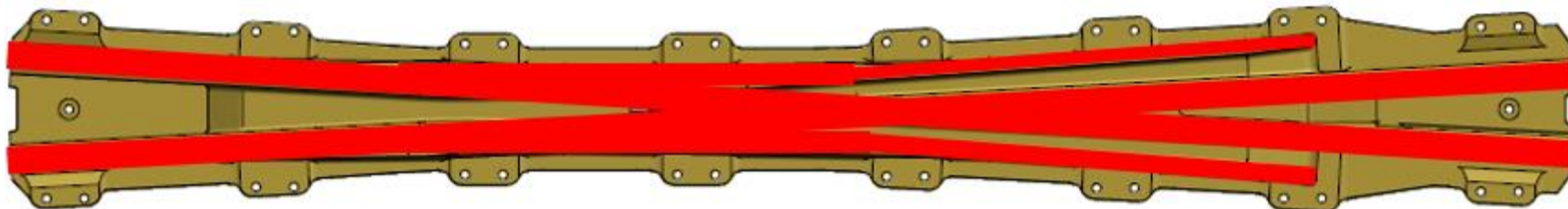
Opération usinage cœur de voie ferroviaire



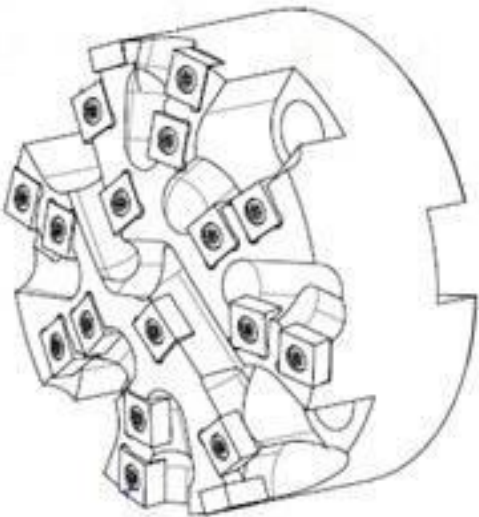
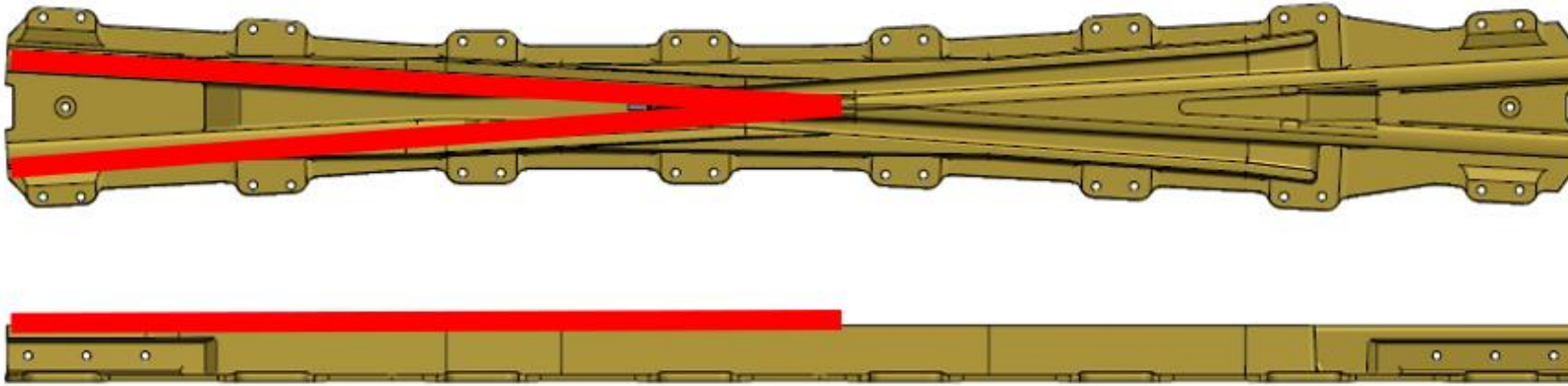
Opération de surfacage de la semelle



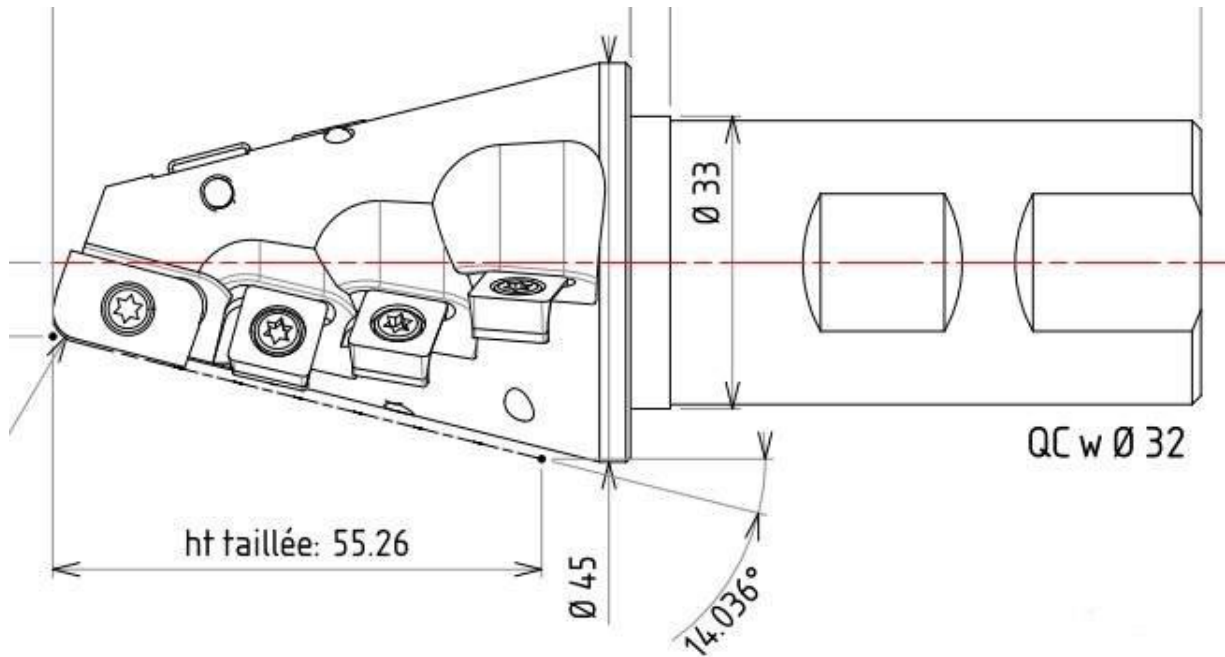
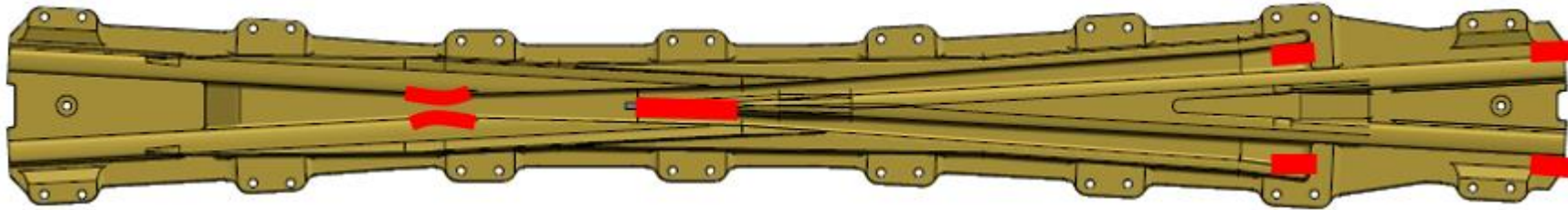
Opération de surfaçage de la planéité



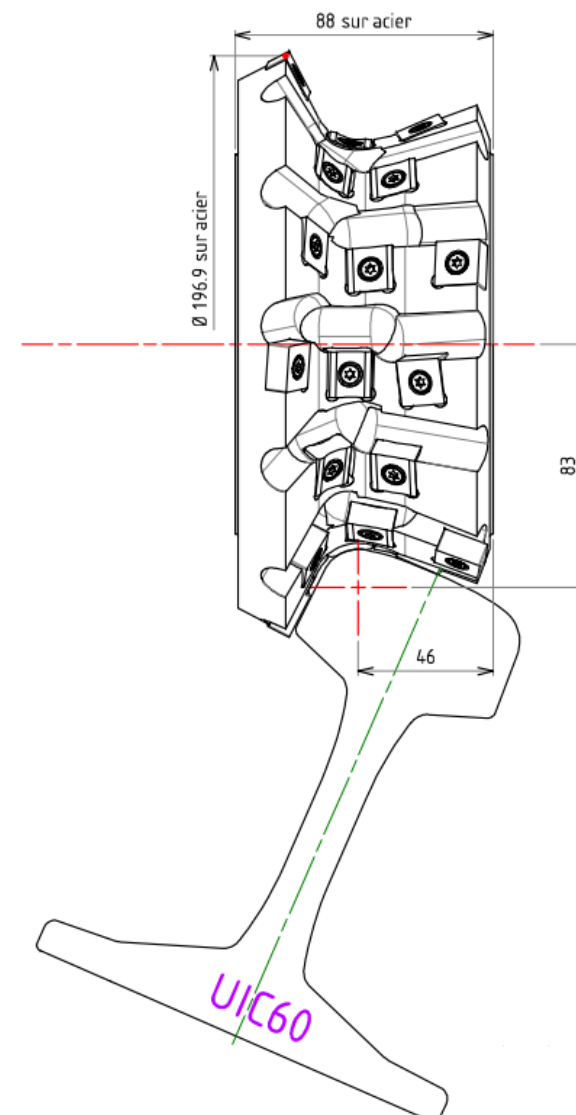
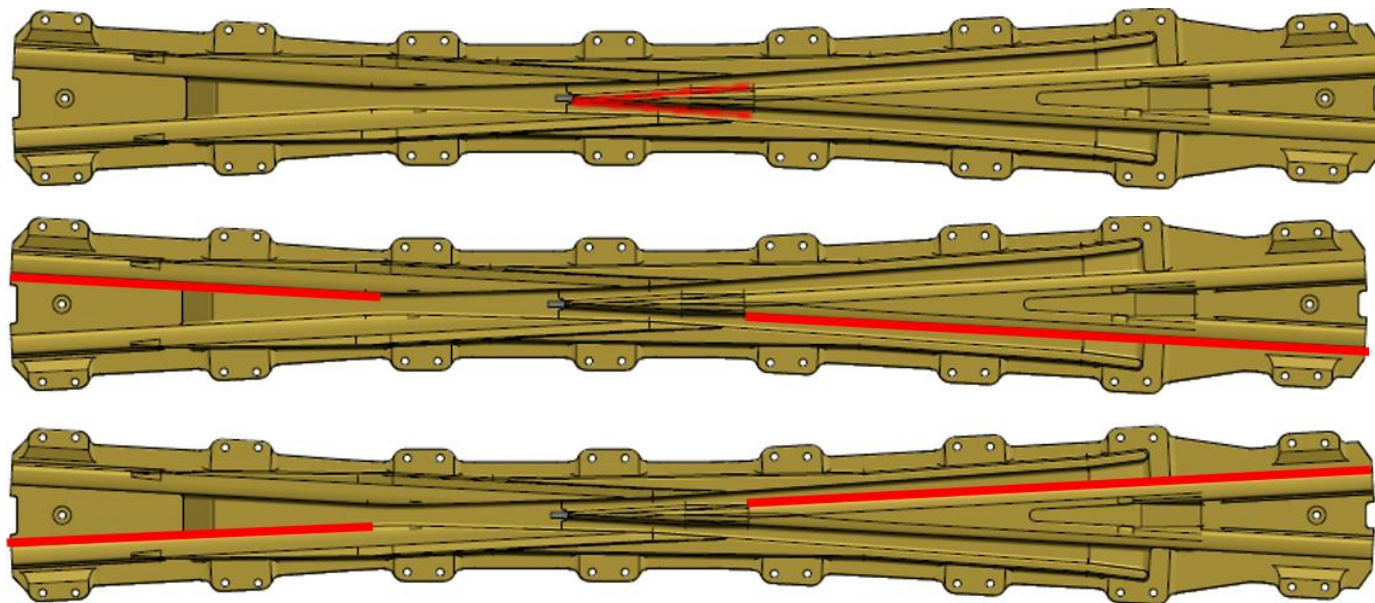
Opération d'ébauche pente 1/8 dos d'âne et finition pente 1/8



Opération de fraisage de la gorge de roulement pente 1/20



Opération de fraisage de la pointe et de la partie de roulement gauche et droite avec fraise diablo



Opération de perçage des trous de fixations

